

Seed Treatment Fungicide

Advanced, cost-effective control of blackleg

IleVO® introduced a sub-class of SDHI chemistry that raised the level of blackleg infection reduction for a seed treatment. IleVO continues to produce impressive results while offering growers a wide range of tank-mix options so that treatment can be tailored to suit the prevailing pest and disease threats as economically as possible.



- Proven performance protecting NVT-topping hybrids
- More cost-effective than equivalent chemistry
- Reduced lodging and stem infection later in the season
- Promotes strong emergence and early vigour
- No reduction in germination rates or hypocotyl length
- Excellent tank-mix flexibility

Crop registration

Canola

Disease registration

Blackleg (control)

Fungicide MoA group

Group 7

(SDHI sub-group)

Application method

Undiluted or mixed with enough water to ensure thorough and even seed coverage

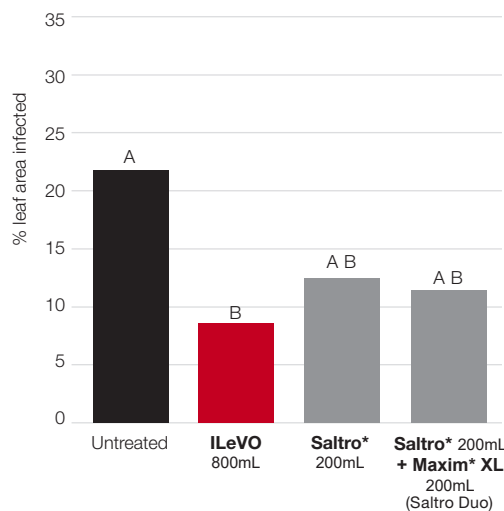
WHPs

Harvest – not required

Grazing – 8 weeks

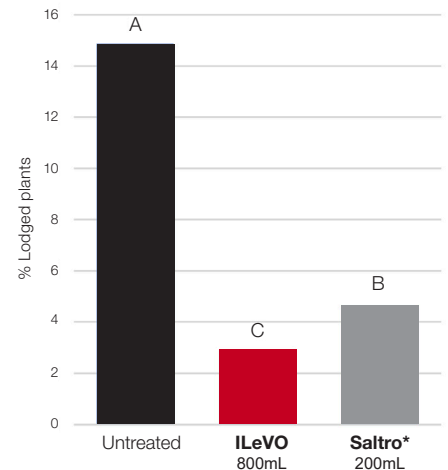
Consistently superior infection reduction

Ilevo provides a new benchmark in blackleg infection management



DEV-S-2023-AU-501-A-01.0-AU-AWS-SL1, York WA, August 2023

Ilevo delivers superior lodging reduction versus competitors



Averaged results of 10 BASF trials, 2021–22



For more information on IleVO, visit crop-solutions.basf.com.au or contact your local BASF representative on **1800 558 399**



Seed Treatment Fungicide

Getting the best out of ILeVO

Rate

800 mL/100 kg seed

Method

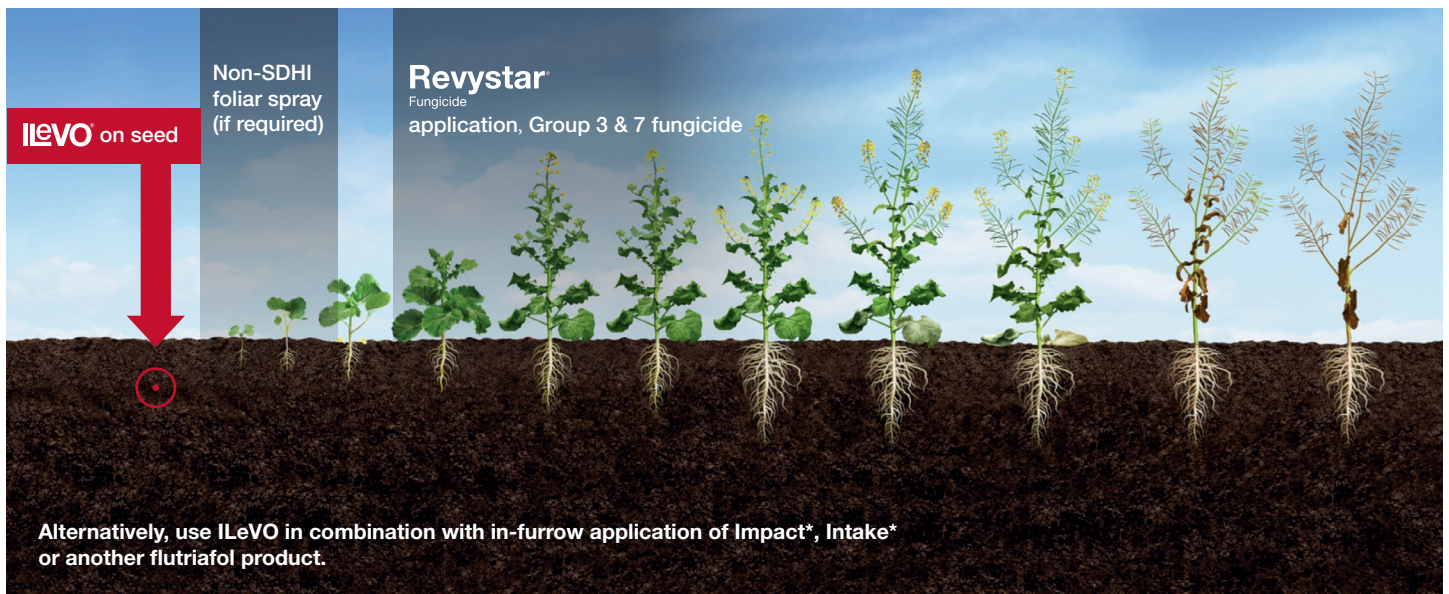
Shake container well or use other agitation method to ensure thorough mixing of product before adding to application equipment. ILeVO should be applied undiluted or mixed with sufficient water to ensure even coverage of seed. The quantity of water used will vary depending on factors including type of equipment, quality of seed and other products mixed with ILeVO.

Managing both blackleg and resistance

Fungicide rotation

If ILeVO treatment is followed by foliar spray when the crop is 2–6 leaf, the fungicide should be from another mode of action group. Alternatively, ILeVO can be used with in-furrow application of a flutriafol product to protect the seedlings until the flutriafol is taken up and extends that protection, reducing the likelihood that an early foliar spray will be required.

A foliar SDHI fungicide can be used from 6-leaf to the 50% flowering growth stage. Always refer to the product label for the recommended application timing on varieties with blackleg ratings of MS or lower.



Complementary management methods

The other key management practices recommended in GRDC's Blackleg Management Guide are:

- Never sowing canola into the previous year's canola stubble
- Choosing a canola variety with adequate blackleg resistance for the region
- Monitoring canola in spring to determine yield losses in the current crop
- If you start to lose yield from a variety you've been growing for three or more years, swap to a variety from a different blackleg resistance group.

For more information on ILeVO, visit crop-solutions.basf.com.au or contact your local BASF representative on **1800 558 399**

ALWAYS READ AND FOLLOW LABEL DIRECTIONS.

This fact sheet is intended as general advice. The information submitted in this publication is based on current BASF knowledge and experience. In view of the many factors that may affect its application, this data does not relieve the user from carrying out their own tests. The data does not imply assurance of certain properties or of suitability for a specific purpose. It is the responsibility of the user to ensure that any proprietary rights and existing laws and legislation are observed.

© Copyright BASF 2024 © Registered trademark of BASF. * Registered trademarks. BASF0111 0824

BASF

We create chemistry