

NEW

# Frequency<sup>®</sup>

Herbicide

## Getting the best out of Frequency<sup>®</sup> herbicide prior to application

Apart from being a new Group H post emergent broadleaf herbicide for Australian cereal growers, there is a lot that's new and a little different with Frequency<sup>®</sup>.

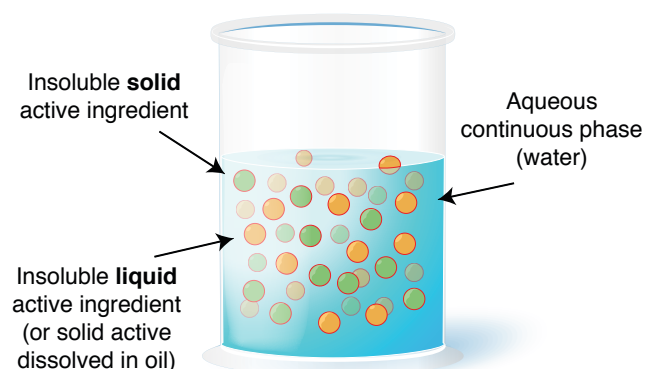
Importantly the Frequency formulation was developed as an SE. That is, it is a specific formulation developed in order to optimise both formulation stability and product performance for growers.

### What is an SE formulation and why is it a little different?

As a relatively new breakthrough in formulation technology, a suspo-emulsion (SE) is a fluid, heterogeneous formulation consisting of a stable dispersion of active constituents in the form of solid particles and fine globules (liquid) in a continuous aqueous phase. As such, when growers first open a drum or container of Frequency (before shaking or inverting), it may look different to what they are used to seeing with other formulations such as EC's or SC's.

### Why is this important?

SE formulations basically enable us to put together different active ingredients with different physical-chemical characteristics and is a much more complex system than other formulation types (EC's for example)



On dilution in the spray tank the SE formulation is further diluted

### Should agronomists and growers be concerned?

Absolutely not. It may look different when the container is first opened (if not shaken prior), but it is a characteristic of the SE formulation, not a product defect.

During research and development process in bringing Frequency to market, the NEW SE formulation was tested extensively. The physical stability of the formulation was shown to be excellent under all temperature regimes above 0°C. However, the physical characteristics of the formulation mean that in very cold conditions i.e. ambient temperatures of storage below 0°C, the viscosity and flow characteristic of the product changes and 'thickness' does tend to increase and this is fully reversible by shaking vigorously for 15-20 seconds before pouring and mixing.

There have been no reported instances of the new SE formulation of Frequency causing any mixing issues, filter or nozzle blockages or related efficacy issues when the product is used as directed and label mixing instructions followed.

It looks different because it is different.



**BASF**  
We create chemistry

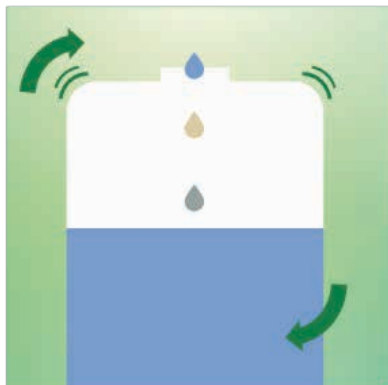


NEW

# Frequency®

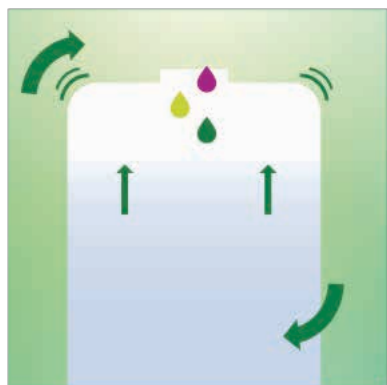
Herbicide

## Recommended tank mixing sequence

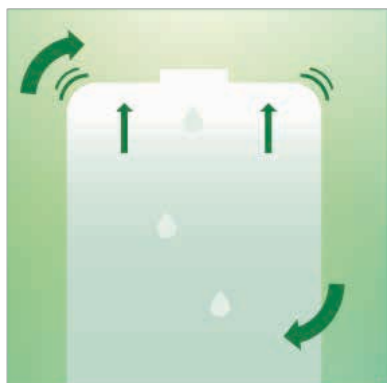


Frequency® Herbicide is a suspo-emulsion (SE) formulation and should be **SHAKEN WELL BEFORE USE**. When using in a tank mix with other herbicides the following mix order should be observed;

1. Fill the spray tank  $\frac{1}{2}$  full with clean water and start agitation
2. Add any granule (WG) products and allow dispersion
3. Add any flowable (SC) formulated products



4. Add any water-soluble salts
5. Add Frequency (SE formulation) and any EC formulations/products
6. Add any adjuvants as recommended (e.g. hasten)



7. Top up the spray tank with extra water
8. Maintain agitation before and during spraying

For more information on Frequency, visit [campaign.basf.com/Frequency](https://campaign.basf.com/Frequency) or contact your local BASF representative on 1800 558 399

#### ALWAYS READ AND FOLLOW LABEL DIRECTIONS.

This fact sheet is intended as general advice. The information it contains is based on current BASF knowledge and experience. In view of the many factors that may affect its application, this data does not relieve the user from carrying out their own tests. The data does not imply assurance of certain properties or of suitability for a specific purpose. It is the responsibility of the user to ensure that any proprietary rights and existing laws and legislation are observed.

© Copyright BASF 2020 ® Registered trademark of BASF. W245852

**BASF**  
We create chemistry